

# KÄYTTÖPAIKOILLAAN BS-LM 50-10-3.5



- Sopivat puhtaat kaasut
- Kromattua messinkiä

Laboratoriot ja analyysit

## Domains of applications

BS.LM-säätimet on suunniteltu pääasiassa asennettaviksi laboratorion penkkeihin.

**Designed for implementation of:**  
puhtaat kaasut

## Specifications

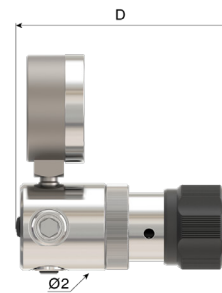
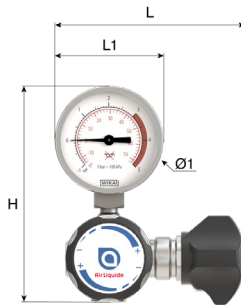
Maximal inlet pressure at 15°C.....50 bar  
Outlet Pressure.....1 to 10 bar  
Nominal nitrogen flow .....3.5 m<sup>3</sup>/h\*\*

## Safety Alert

⚠ Varoitus! Jos käytetään hapen ja hapettavat kaasut, työpaine ei saa ylittää 25 bar.

# Dimensions

Length (L) : 80 mm  
 Height (H) : 105 mm  
 Depth (D) : 140 mm  
 Ø1 : 50 mm  
 Net weight : 1.15 kg



## Operating instructions

OP 250 - BS-LM

## Connection

**Inlet connection:** 2 tuloaukkojen G 3/8 BSPP naaras

**Outlet connection:** 2 pakoaukkojen G 3/8 BSPP naaras

## Products

Product Number	Short Designation	Gas	Inlet Pressure	Outlet Pressure	Flow	Inlet Fitting	Outlet Fitting	Material
118168	POU BS.LM 50-10-3,5	seokset, Puhtaata kaasut	50 bar	10 bar	3,5 Nm <sup>3</sup> /h	G 3/8 BSPP naaras	G 3/8 BSPP naaras	Messinki
136930	PoU BS-LM 50-10-3 G3/8 M / KIT N°2	seokset, Puhtaata kaasut	50 bar	10 bar	3,5 Nm <sup>3</sup> /h	G 3/8" BSPP M	KIT N: o 2	Messinki
136932	POU BS-LM 50-10-3,5 G3/8 M - G3/8 AL F	seokset, Puhtaata kaasut	50 bar	10 bar	3,5 Nm <sup>3</sup> /h	G 3/8" BSPP M	G 3/8 BSPP naaras	Messinki

## Options

	Product Number	Long designation
	16516	CONN. G3/8 BSPP M NIP. F/PIPE Ø 4-6MM
	16521	Connector Cr-Brass G3/8 BSPP Male *Compression fitting 1/8" OD Brass *Flat seal PTCFE
	16522	CONNECTION G 3/8" Male Compression Fitting 6 MM Br
	16523	Connector Cr-Brass G3/8 BSPP Male *Compression fitting 1/4" OD Brass *Flat seal PTCFE
	16524	Connector Cr-Brass G3/8 BSPP Male *Compression fitting 10mm OD Brass *Flat seal PTCFE
	16526	Connector Cr-Brass G3/8 BSPP Male *Compression fitting 8mm OD Brass *Flat seal PTCFE
	16558	Connector SS G3/8 BSPP Male *Compression fitting 6mm OD SS *Flat seal PTCFE

	Product Number	Long designation
	16562	COMP. FITTING G3/8" 8 MM SS
	16564	CONNECTION G 3/8 BSPP Male - CF 3/8" - Stainless S
	16566	Connector SS G3/8 BSPP Male *Compression fitting 1/8" OD SS *Flat seal PTCFE
	16567	Connector SS G3/8 BSPP Male *Compression fitting 10mm OD SS *Flat seal PTCFE
	16569	Connector SS G3/8 BSPP Male *Compression fitting 12mm OD SS *Flat seal PTCFE
	19286	Liitäntä G3/8 BSPP M NIP. Ø 8-10MM BR